



KRISTEN BARNARD/TheSignal

STUDENTS STUDY in the shade of a tree outside Cone Bottoms. The Environmental Stewardship Committee hosted Arbor Day events for tree appreciation.

## Arbor Day incorporates environmental issues

By ERICA PORTER  
Signal Writer

The Environmental Stewardship Committee will host an Arbor Day celebration on Friday, April 29, to raise awareness of the importance of trees among students. The celebration will be held in the middle of the campus and will include a scavenger hunt, tree planting and a workday in the Ravine.

"Arbor Day not only brings awareness to people about environmental issues and

how important it is to be a good steward of this earth that we were given, but it also helps for us to make our campus a more enjoyable place to live," said Madison O'Connor, a senior sociology and political science major and member of the Environmental Stewardship Committee.

This is the committee's first time to host the event for the student body. It is a part of the qualifications the Environmental Stewardship Committee has been working

see TREES, p. 3



LINDSEY UPSHAW/TheSignal

A TREE by McClellan Hall basks in the sun. Arbor Day is celebrated on campus this year with a scavenger hunt, tree planting and a workday in the Ravine

## Senior Seminar projects create campus culture

By JORDAN CAMPBELL  
Signal Writer

For senior seminarians in the School of Humanities, creating a concept map has been replaced by authoring projects designed to add to Ouachita's unique culture.

This year's project theme is based on the book "Culture Making" by Andy Crouch. The book describes how to make an impact on a community.

"One of Crouch's ideas is that culture making involves providing the community with the opportunity to do something they could not do before," said Stephanie Beck, a senior Russian and French major. "Crouch also emphasizes God's desire that we promote community."

Projects the students are working

on range from a time lapse and stop motion video, "Pic-a-Prof," establishing connections within the English department, creating a study room and proposing a new class in which students study films.

"My group is setting up a display called 'Pic-a-Prof,'" Beck said. "It is a display outside of the Student Services office showing items from various faculty and staff members. We hope that the items will allow students and visitors to see an aspect of these people's lives that they may not know. Some professors have offered photos or poems, for example. We also hope that this display will grow Ouachita's community by opening up dialogue between those [faculty and staff members] whose items are displayed and those who view the items."

Zach Nottingham, a senior mass

communications major, is basing his project off a unique concept of literally showcasing Ouachita's campus and students.

Nottingham is making a video featuring a wide variety of activities and people on campus. In the video, he has a paintball fight with Dr. Keldon Henley, vice president for Student Services and dean of students, and rescues a cat for sophomore musical theater major Alison Johnson.

"I was originally doing this project for fun," Nottingham said. "Every day I go out and take at least one picture and have been doing it since the end of January. Every picture is a step. It started at my dorm room and is now at Walker Conference Center. Throughout the video, you can see

see SEMINAR, p. 2

## Keck's service honored during tribute evening

By ALLISON CORNELL  
Signal Writer

Dr. George Keck is retiring after 42 years of dedicated service to Ouachita. Students, faculty, alumni and friends gathered Monday to celebrate his years of teaching.

The gala in Keck's honor was held in Walker Conference Center on Monday night and was followed by a concert in McBeth Recital Hall featuring guest pianists Andrew Granade and David Allen Wehr along with the Women's Chorus and Ouachita Singers.

The evening's events honored Keck as he approaches retirement this spring. He has taught at Ouachita since the fall of 1969.

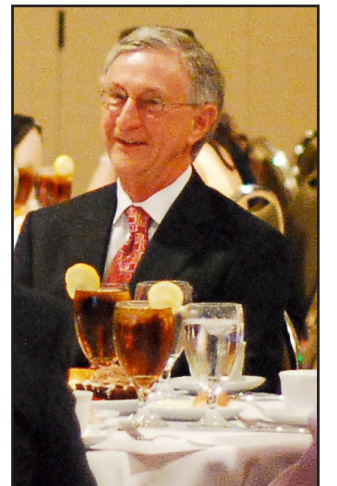
"The years have gone by unbelievably fast," said George. "I've been at Ouachita for 42 years, but my career is in all of the wonderful people that I've known. I could tell you a story about every single one of them. I've absolutely loved my career, the subject matter and the people."

During his time at Ouachita, he not only taught classes but was also the chair of the applied music department, coordinator of the keyboard area and served on many campus committees.

"Ouachita will not be able to replace Dr. Keck," said Dr. Scott Holsclaw, dean of the School of Fine Arts. "His knowledge and expertise in music literature and history will be unmatched. Dr. Keck has also been such an asset to all university committees and governance. His wisdom in academics, music studies and university governance has served the university well over the years."

Keck met his wife of 38 years, Dr. Ouida Keck, at Ouachita, in the fall of 1972. Ouida, the Addie Mae Maddox professor of music and coordinator of the keyboard program, describes her husband as dedicated and loyal.

"He is dedicated to his students and his career," Ouida



NICOLE MCPHATE/TheSignal  
DR. GEORGE Keck

## Then & Now: Founding father never leaves campus, moves resting places

By TANNER WARD  
News/Features Co-Editor

"A Life Invested in Lives. John William Conger. Founder and President. Ouachita Baptist College. June 22, 1886 - June 5, 1907."

Those are the words inscribed on the tombstone of Ouachita's first president, John Conger. John and his wife are buried on campus behind Evans Student Center and O.C. Bailey Hall, but they have not always been buried in that spot.

"[Conger] and his wife used to be buried next to Flenniken Hall," said Dr. Jeff Root, dean of the School of Humanities. "Flenniken was torn down so Anthony Hall could be built. They had to move them because they were in the footprint of the new building."

John was born on Feb. 20, 1857, in Jackson, Tenn. The Conger family was known for its intelligence; John's grandfather invented the turbine water wheel and regu-

larly wrote for the Scientific American magazine, according to the book "Ouachita Baptist University: The First 100 Years" by Michael Arrington.

John, the seventh of 10 children, grew up to attend what is now Union University, then called Southwestern Baptist University, in Jackson, Tenn. He served as president of Odd Fellows College in Humboldt, Tenn., and Searcy College in Searcy, Ark. He was also the principal at Prescott High School in Prescott, Ark., for one year.

In 1886, he was elected the first president of Ouachita Baptist College.

John married his first wife, Carrie McKinney, in 1882, but she died during the first year of their marriage.

He remarried in 1884 to Jennie Hamilton, and they remained married until her death in 1923.

Tennie Conger served at Ouachita in various capacities during her husband's presidency including teaching as an

see CONGER, p. 2

see KECK, p. 3

## In the Bubble:

•Students are invited to use the new study room, The White Rabbit Study Nook, located in Lile 242.

•Ouachita Jazz Band is performing Tuesday, April 26, at 7:30 p.m. in Jones Performing Arts Center. The concert will also be webcast at [www.obu.edu/band](http://www.obu.edu/band).

•PRISM, a showcase of Wind Ensemble, Combined Bands and Chamber Ensembles, will be performed Thursday, April 28, at 7:30 a.m. in Jones Performing Arts Center. The concert will also be webcast at [www.obu.edu/band](http://www.obu.edu/band).

•Ouachita String Ensemble is performing Friday, April 29, at 7:30 p.m. in McBeth Recital Hall in Mabee Fine Arts Center.

•Outdoor Recreation is taking an Earth Day canoe trip at Upper Caddo River tomorrow from 9 a.m. to 4 p.m. The cost is \$5. To sign up, e-mail Clayton Chapuis at [chapuis@obu.edu](mailto:chapuis@obu.edu).

•The Concert Choir will perform Leonard Bernstein's Chichester Psalms and Gabriel Fauré's Requiem on Tuesday, May 3, at 7:30 p.m. in McBeth Recital Hall.

•Student Senate officer elections were held yesterday. The winners are John Jacob Lively, president, John Williams, internal vice president, Aaren Crews, external vice president, Katelyn Smith, secretary, Hope Freel, treasurer, Tanner Huffman, position 1, Amanda Seeley, position 2, Elizabeth Burke, position 3, and Taurus Williams, position 4.

•Students can receive a 10 percent discount on their books when they reserve or pre-pay for their entire schedule for the fall at the OBU Campus Bookstore.

•Kayla Smith will present her research titled "The British Perspective of the American Revolution" in a student colloquium Monday, April 25, at noon in the alumni room in the Commons. Students can get lunch from the line and leave as needed for classes.



SARAH SPARKS/TheSignal

ZACH NOTTINGHAM works with his group on their Senior Seminar culture-building project. Nottingham created a video featuring a wide variety of activities and people crossing Ouachita's campus.

### SEMINAR, continued from page 1

trees getting leaves back, flowers blooming and my beard growing."

Ian Deetz, a senior Spanish major, was first inspired for his project by an assignment in his American Letters class. After having to watch and analyze a movie as a homework assignment, he was motivated to make this practice available as a class.

"I think movies are an under-rated art form, and we should be able to study them as part of our higher learning," Deetz said. "In today's society, more people watch movies than read books, so we should learn how to analyze a movie in the same way we have learned to analyze books. The prospective class would be a half-hour course that would meet every other Tuesday evening to watch a film together and discuss its artistic value."

According to the students, participating in these project has helped them reach outside their comfort zones and work together with their peers.

"I think the biggest thing that I have taken away from this project is the positive response from faculty and staff," Beck said. "This has encouraged me in ways that will motivate me to continue aspiring to make culture in the future." ■

### CONGER, continued from page 1

art instructor and Lady Principal of the Home Department.

Upon his death on April 7, 1924, John was buried with Tennie in a mausoleum on campus. The mausoleum was later buried in the location near Fleniken Hall and then moved to the location near Evans Student Center before construction began on Anthony Hall in the 1990s.

Root said officials — under supervision from the county coroner's office — used a crane to lift the mausoleum from the ground and onto a flatbed truck. The truck transported the mausoleum down Campus Drive

to its new location, where it was again buried using a crane.

The Congers' new headstone was placed above their graves in the current location. It is nicer and larger than the previous one, according to Root.

"The move not only allowed for a new dorm, but also for a new headstone for the Congers," he said. "It's interesting that it's bigger than most markers in cemeteries. It's also unusual for someone to be buried on a college campus." ■

# Top 5

## Things to do when the power goes out in the dorms

(in honor of Tuesday night's storm)

By The Signal Staff  
SIGNAL WRITERS

- 1 Play cards by flashlight. You don't even need a poker face.
- 2 Flashlight tag. Just stay away from the stairs.
- 3 Make Facebook statuses about the fact that the power is out.
- 4 Use it as an excuse to not do homework.
- 5 Park Townsend Keller's car in the Village Circle. You know who you are.

Want to help write the Top 5 each week? Submit your ideas on our Facebook page, **OBU Signal**.

# Purple, gold and green

## Students get economically friendly dorm tips

By TARAH ELLIOTT  
Signal Writer

According to [www.dosomething.org](http://www.dosomething.org), a single American can produce more than 3,285 pounds of hazardous waste per year. When one takes into account the 1447 students attending Ouachita, the amount of waste that can be generated by this campus is astronomical. Factoring in the student body alone, that is a total of 4,753,395 pounds of waste each year.

"The world's resources are dwindling," said David Owens, energy manager and advocate of eco-friendly living. "The natural environment is becoming more toxic and polluted. We have a mandate from God to care for his creation, and we are failing. 'Tread lightly' is not just a slogan for campers and backpackers. We are only here on this earth for a short time."

According to [www.greenstudentu.com](http://www.greenstudentu.com), Americans throw away enough trash every day to fill 63,000 garbage trucks. Along with this, Green Student points out that Americans throw 1 million bushels of litter out their car window every single day, and that 80 percent of waste in a landfill could be recycled but is not.

Owens said there are a number of ways students can help combat these overwhelming figures.

He suggested that students turn off their electronics when not in use, use compact florescent lights (which use 75 percent less energy), look for and buy Energy Star rated mini-fridges and televisions, turn off the water while they brush their teeth, share fridges, use a drying rack rather than an electric dryer for clothing, avoid driving cars on campus, use organic bedding and avoid picking up more food in the cafeteria than what they will eat.

He said a tight budget need not keep students from contributing because there are a number of inexpensive ways to help.

"Being eco-friendly costs as much or as little as you like," Owens said. "Most things on the list above are things that students buy anyway. They are going to buy these products for their dorm rooms. I am just suggesting they choose more wisely, preferring the energy efficient things and better practices over the less efficient or un-thought out practices."

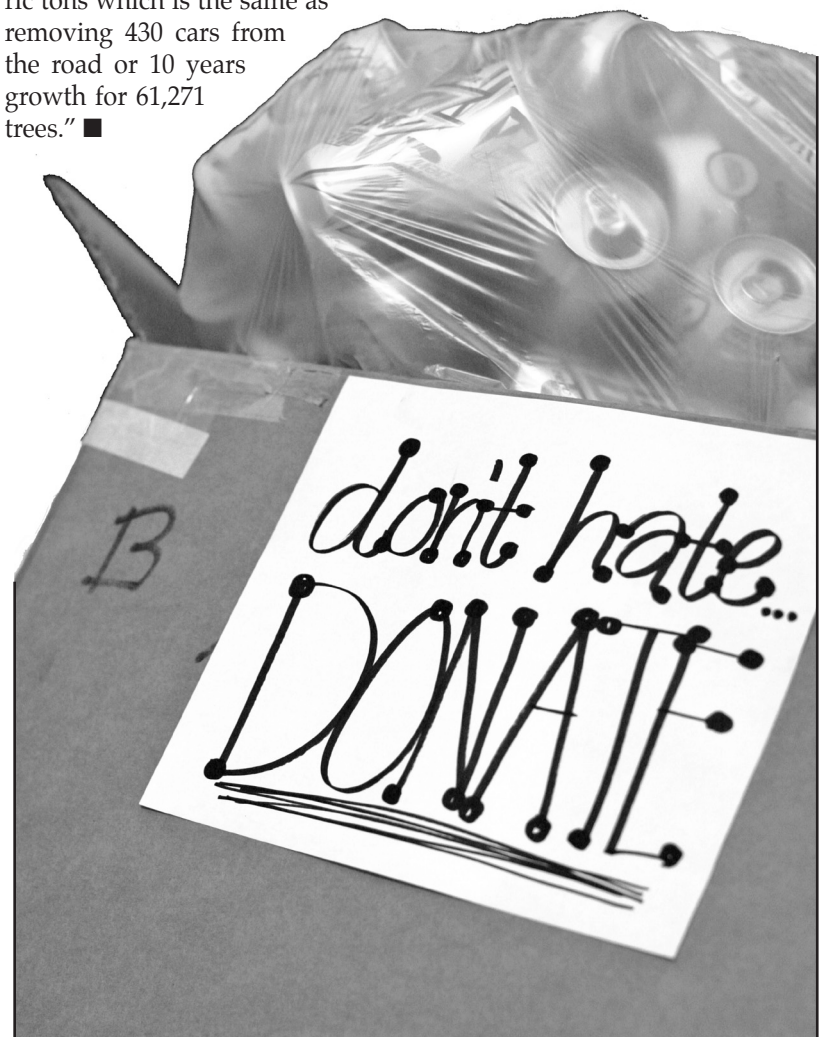
Dr. Brett Powell, vice president of Administrative Services, is also an advocate for more eco-efficient living.

"Students should start small," Powell said. "I think this is good advice for any goal you are working toward. I have often heard that it takes 21 days to form a new habit. So, one approach might be to concentrate on one change for three weeks. Once that change has become part of your routine, concentrate on a second change for the next three weeks, and so on."

In the grand scheme of things, students might think recycling a few bottles here and there or switching the lights off when they leave will not

make a huge difference, but the exact opposite is true.

"Small changes definitely add up to big impacts," Powell said. "Our energy conservation program on campus is a good example of that. We have made hundreds or thousands of small changes by asking students, faculty and staff to adjust some of their normal habits and by being smarter about the way they heat and cool buildings. None of these were significant changes, but they have added up to a huge reduction in energy use. Through that program, we have reduced our energy consumption by 13 percent, which equates to reducing our CO2 emissions by 2,395 metric tons which is the same as removing 430 cars from the road or 10 years growth for 61,271 trees." ■



SARAH SPARKS/TheSignal

RECYCLING AREAS are located on campus where people can donate their various recyclables for reuse.

**newonline**  
[www.obusignal.com](http://www.obusignal.com)

### SLIDESHOWS

- OBU Gold Tigers' Banquet
- Bye Bye Birdie Rehearsal
- Eta Date Auction

### VIDEO

- A Scene from 'Whose Line'
- Eta 'Whose Line'
- POTS: Why do Betas make the best dates?



NICOLE MCPHATE/TheSignal

WOMEN'S CHORUS performs at the concert celebrating Dr. George Keck's retirement. Keck announced his retirement this year after more than four decades teaching at Ouachita.

**KECK**, continued from page 1

said. "He's dedicated to his friends and is a very loyal and supportive person to his friends. He's dedicated to music and all causes related to music. He's also dedicated to civic causes. [I love] his commitment to the important things. He has outstanding character."

Keeping with his dedication to civic causes, Keck plans to spend his time serving those causes after his retirement.

"I want to spend my time volunteering with causes that I believe in," George said. "I would like to do more for them."

Keck's influence at Ouachita is perhaps experienced most by his students. Elisabeth Hipp, a senior vocal performance major, explained the impact Keck has had on her Ouachita experience.

"Dr. Keck is an incredible professor not only because of his contagious passion for what he teaches and his great breadth of

knowledge, but also because of his dedication to both the university and the students here at Ouachita," Hipp said.

In addition to his professionalism, Keck is known by his students and colleagues as a master of wit and humor.

"Dr. Keck is a gentleman and is extremely gracious with a great sense of humor," Holsclaw said. "Unless you have had him in class or spent time with him, you won't know what a great sense of humor and quick wit he has."

As Keck ends his academic career, he leaves a lasting impression on faculty and students that will live on through the years.

"I believe that the music program would not be what it is today without the discipline, work and love Dr. Keck has poured into it," Hipp said. "In my opinion, the music department is facing an incredible loss." ■

**TREES**, continued from page 1

on for making Ouachita a part of the Tree Campus USA program.

"Since this is our first celebration of Arbor Day, we wanted to bring awareness to the campus and let students know that Arbor Day does still exist and it is still important," O'Connor said.

The activities at the celebration are aimed at creating a fun place for students to learn about and get involved in the work that the Environmental Committee does. Students will have the opportunity to plant trees and sign up for campus workdays to plant and maintain trees in the Ravine.

"The whole purpose of Arbor Day is to recognize the value of trees," said Brett Powell, vice president of Administrative Services who is also a member of the Environmental Stewardship Committee. "If we get universities to become a part of it, they can raise awareness around students."

Tree Campus USA is a program of the Arbor Day Foundation, an organization that aims to educate people about the importance of planting and preserving trees.

"If you look around Ouachita's campus, you can see 100-year-old trees," Powell said. "If you don't preserve them, they won't survive."

The requirements for a campus's certification for Tree Campus USA include creating a Tree Advisory Committee, compiling a budget of yearly costs, completing a campus tree care plan, observing Arbor Day and leading a service and learning project for the campus and community. ■

**SCHOLARS' DAY 2011**  
— PRESENTATION SCHEDULE —

Wednesday, April 27

**1:25 – 2:30 p.m.**

Natural Sciences Posters  
ESC Banquet Rooms

**Drew Harper.** "Staphylococcus Aureus and its Isogenic Mutants Use of Hyaluronidase as it Pertains to Hyaluronic Acid in Humans"

**Dustyn Barnette.** "The Effect of SigB Transcriptional Regulators in Hyaluronidase Regulation in Staphylococcus Aureus"

**Tanner Hammond.** "Characterization of Quantum Dot Materials with Porphyrins for Photodynamic Therapy"

**Kendra Lesley.** "Water Soluble Porphyrins and DNA Interaction"

**Clay Fitzhugh.** "Susceptibility of Antibiotics on Staphylococcus aureus and Escherichia coli at Reduced Atmospheric Pressure"

**Lindsey Pearson.** "Oxidative Stress Induced Programmed Cell Death Related to Glutathione Signaling Pathways in Transgenic Tobacco"

**Kimberly Carlton.** "Oxidative Metabolism of Nitroanisoles Using the Iron(V)-Oxo For of CYP2E1"

**Kasa Cooper.** "Computational Docking Simulations of Oxidative Metabolism of CYP2E1"

**Max Ford.** "Computational Docking of 3-Nitroanisole with the 3E6I Crystal Structure of CYP2E1"

**Joseph Levy.** "Extracellular Matrix Proteoglycans and Alzheimer's Disease"

**Amy Wood.** "Identification of Protein-Ligand Binding Profiles for Ajulemic Acid"

**Whitley Hoppe.** "Anti-tumor Effects of Ajulemic Acid in Rhabdomyosarcoma"

**Matthew Pope.** "CXCR4 Tumor Specific Promoter Restricts Oncolysis To Pancreatic Cancer Cell Lines That Overexpress CXCR4"

**Abby Dekle.** "Treatment of Ewing's Sarcoma RDES Cell Line with Ajulemic Acid"

**Allie Baldwin.** "Sensory Evaluation of Apple Crisp Prepared with Sugar Substitutes"

**Kyle Bartlett.** "Sensory Evaluation of Sopapilla Cheesecake Prepared with Sugar Substitutes"

**Shannon Bennings.** "Sensory Evaluation of Fresh Strawberry Pie Prepared with Sugar Substitutes"

**Amy Berry.** "Sensory Evaluation of Bran Muffins Containing Stevia Sugar Substitute"

**Bryan Church.** "Heart Healthy Poppy Seed Chicken"

**Sara Hanson.** "Evaluation of Cranberry Bread Substituted with Varying Types of Wheat Flour"

**Chelsie Kauffman.** "Sensory Evaluation of Mocha Punch Prepared with Sugar Substitutes"

**Katelyn Mustain.** "Sensory Evaluation of German Chocolate Cake Prepared with Fat Substitutes"

**Megan Rishel.** "Sensory Evaluation of Strawberry Pie Prepared with Fat Substitutes and Sugar Substitutes"

**Chris Chandler.** "Physiological Responses of

Phaseolus Vulgaris Subjected to Hypobaria"

**Mikki Gaines.** "Use of Ajulemic Acid to Cure Osteosarcoma"

**3 – 4 p.m.**

Social Sciences Posters  
ESC Banquet Rooms

**Whitley Berry.** "The Effect of In-Group and Out-Group Bias on Personal Perception"

**Kate Strom.** "A Comparison of Attitudes Towards Autistic Children by Public and Private School Teachers"

**Sarah Anderson, Breana Dillard and Karlee Finney.** "Using Local Indicators to Evaluate Arkadelphia, AR"

**Karlee Finney.** "Media's influence on Women's Body Image"

**Brandon Sanders.** "Globalized Culture"

**Kimberly Matthews, Jessica Wasmund and Faith Williams.** "Differentiation Theory"

**Kurt Bannert.** "Aggressive Music and Its Effects on Video Game Performance"

**Judith Brizuela.** "Religious Primes and Pro-Social Behavior"

**Kimberly Carlton.** "The Effects of Consciousness of Future Responsibilities on Present Nostalgic Behavior"

**Casheba Christopher.** "The Attitude Study"

**Angela Davidson.** "Test Anxiety in Different Testing Situations"

**Mark Dewbre.** "Effects of Social Interaction on Task Performance"

**Kelsi Ferguson.** "Extracurricular Activities Effects on Social and Academic Identities"

**Kelsey Finney.** "Religiosity and Personality"

**Rebecca Gray.** "Gratitude's Prospective Ability to Strengthen Communal Bonds and Consequently Negative Relationships"

**Brittany Green.** "A Study on the Influence of Social Norms on Human Behavior"

**Razvan Goga.** "Facebook and Relationships"

**Brandi Hull.** "Commitment and Stress in Relationships"

**Lauren Keefer.** "Effect of University Social Clubs on Student's Level of Self-Worth"

**Madison Lewis.** "Like Father, Like Son?"

**Erica Mayes.** "The Effects of the Realization of Internal Stereotypes on Profiling Ability"

**Zachary Sparks.** "Mood and Food: Choices Born of Affect or a Study of Emotional Eating"

**Kenton Scott.** "Psychology Skills Used by Swimmers"

**Madison Scott.** "How Gender Affects Dream Content"

**Jessica Wasmund.** "The Effect of Sleep On Memory Recall"

**2 – 3 p.m.**

Recital  
McBeth Recital Hall

**Caitlin Secrest, Phyllis Walker.** "Les Filles de Cadix"

**Christopher Mazen.** "Sonata in C Minor, op.

10, no. 1"

**John Tneoh, Phyllis Walker.** "Don Carlo"

**Emily Tucker.** "Tocatta No. 2"

**Grace Johnson, Phyllis Walker.** "Les Contes d'Hoffmann"

**John Ashburn, Susan Monroe.** "Solo for Alto Saxophone and Piano."

**Christina Wood.** "Scherzo op. 39, no. 3"

**Katie Edenfeld, Phyllis Walker.** "Alcina"

**John Ashburn, Bradley Lindsey, Alex Goff and Alissa Hill.** "Grave et Presto"

**Elisabeth Hipp, Phyllis Walker.** "Linda di Chamounix"

**John Ashburn, Elisabeth Hipp.** "I Never Saw Another Butterfly"

**3 – 3:30 p.m.**

Recital  
McBeth Recital Hall

**Katie Willhite, Kathryn Kellogg.** "Proof"

**Katie Willhite, Kathryn Kellogg.** "Betty's Summer Vacation"

**Emily Tucker.** "Original Composition"

**4:30 – 5:30 p.m.**

Juried Art Show  
Verser Theatre Gallery

**Ashley Turner.** "Final Meal Place Set"

**Anthony Ridgeway.** "Swansong Logo"

**Meg Gosser.** "Poppy Seeds"

**John Oakley.** "Self-Portrait with Wellbutrin"

**Katie Hopmann.** "The Heart Grows"

**Sam Chidester.** "Freedom"

**Katie Hopmann.** "Scaled"

**1:25 – 4:30 p.m.**

Honors Theses  
Walker Conference Center A

**2:00 — Jessica Schleiff.** "Mooncakes and Marshmallows"

**2:30 — Sarah Stark.** "From the Middle Ages to Modernity: The Intersecting Supernatural Worlds of Melusine and Today's Popular Culture"

**3:00 — Sarah Greeson.** "Jeely Beely: Rolling into the Russian Fairy Tale"

**3:30 — Liz Richardson.** "'I Was Speaking of Visions:' Gilead through the Lens of Flannery O'Connor"

**4:00 — Lindsay Chastain.** "Not Growin' Up: Children's Poetry"

Walker Conference Center C

**1:30 — Kayla Smith.** "British Perspective of American Rebellion"

**2:00 — Ananda Boardman.** "Body of Lies"

**2:30 — Amy Guiomard.** "Public Perceptions of Schizophrenia"

**3:00 — Brooke Baker.** "Christian Zionism: Prophecy of God or Prophecy Self-Fulfilled?"

**3:30 — Stephanie Beck.** "Secularization

in Orléans, France: A Case Study Utilizing Mark Chavez' "New Differentiation Theory"

**4:30 — Casie Neal.** "A Canary at a Mime Convention: Why Being in Christ Matters"

**1:30 – 5:00 p.m.**

Presentation Sessions  
McClellan 100

**1:30 — Kristen Glover.** "Solid-Matrix Luminescence of Bisphenol-A in Glucose Glasses"

**2:00 — Zachary Sparks.** "The LC50 of Daphnia Magna as a Measure of the Toxicity of Fuels, Biofuels, and their Derivatives on the Environment"

**2:30 — John Gomez.** "A Summer at Stanford"

**3:00 — Emily Coffman.** "Ajulemic Acid Induced Apoptosis of Ewing's Sarcoma Cells"

**3:30 — Colmon Massey.** "Potential Receptors by which Ajulemic Acid Induces Cell Death in Ewing's Sarcoma Cells"

**4:00 — Jeremiah Nugent.** "Oxidative Stress Induced Programmed Cell Death Related to Glutathione Signaling Pathways in Transgenic Tobacco"

**4:30 — Allie Baldwin.** "Health Camp 2010"

Young Auditorium

**1:30 — Andrea Jones, Judith Brizuela, Jared Curlin, Stephanie Batsel, Haley Prowell, Chris Chandler and Alex Nelson.** "S.I.F.E. presentation of 2010-2011 Service Projects Empowering Arkadelphia and Surrounding Areas"

**2:00 — Aspen Grams, Sarah Richardson, Justin Hodges and Jordan Campbell.** "Discover the Difference Campaign"

**2:30 — Emily Davis.** "Virtue vs. Destiny: Contrasting Two Versions of Beauty and the Beast"

**3:00 — Bethany Ivie.** "Wargs, Witches and Little People"

**3:30 — John Gomez.** "Thus Spake Aschenbach: 'Death in Venice' as Thomas Mann's Annihilation of Nietzsche"

**4:00 — Sarah Howard.** "When All Else Fails, Hope Prevails"

Hickingbotham 200

**1:30 — Reuben Cash.** "Bailing Out America: Institutional Aid"

**2:00 — Humoyiddin Ravshanov.** "The Armenian Genocide and the Response of the International Community"

**2:30 — Tyler Hawkins.** "A Dual Life: Dan Harmon"

**3:00 — Sarah Barteaux.** "The Impact of R. A. S. Macalister's Excavations of Tel Gezer"

**3:15 — Katie Patterson.** "The Power of Individualism: A Comparison of Bettina and Sisterdale, Freethinking German Settlements in 19th Century Texas"

**3:30 — Renee Adams.** "Buddhism and Psychology: Addressing Suffering"

**4:00 — Christopher Redmon.** "Beyond the Torii Gates: A Survey of the Shinto Shrine"